

CONVENTION HALL LEVEL



*Space C2A is not available to book as its own rental space.

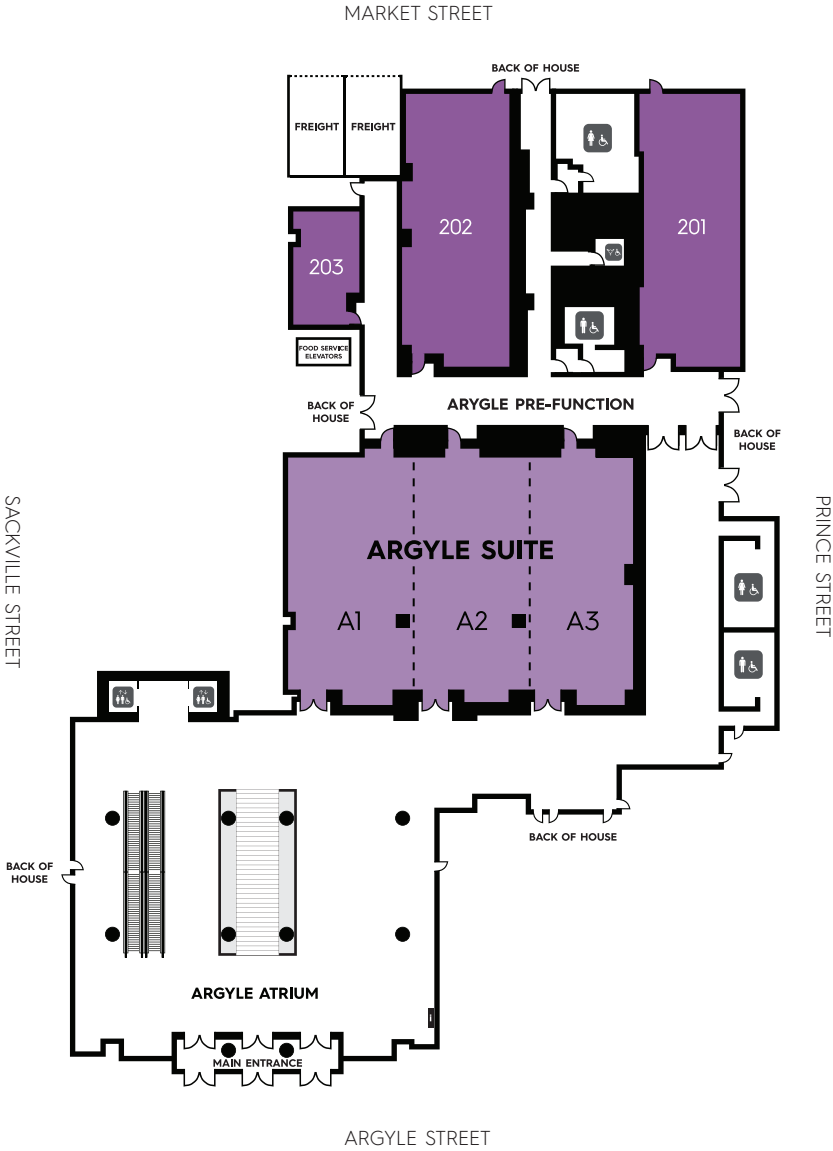
CONVENTION HALL LEVEL

	L	W	SQ. FT.	Theatre AV/Stage	Classroom AV/Stage	Ovals of 10 AV/Stage	Reception	10x10 Booth	U Shape	Hollow Square	Board Room
Convention Hall	154	163	25000	2500	1200	1500	3000	144	•	•	•
Section C1	154	60	9240	650	460	500	650	51	•	•	•
Section C2	154	57	8778	860	453	500	1100	50	•	•	•
Section C3	56	46	2576	215	105	160	300	12	•	•	•
Section C4	91	46	4186	340	180	230	500	21	•	•	•
Sections C3-C4	147	46	6762	600	315	400	850	36	•	•	•
Sections C1-C2A	154	89	13700	1300	660	700	1625	77	•	•	•
Sections C2B-C3-C4	154	74	11300	1100	530	600	1400	60	•	•	•
Section C5	124	100	12400	•	•	500	1372	46	•	•	•
Room 101	48	31	1488	125	60	80	200	•	33	42	38
Room 102	48	31	1488	125	60	80	200	•	33	42	38
Room 103	59	28	1652	150	90	100	225	•	51	60	50
Room 104	59	29	1711	150	90	100	225	•	51	60	50
Room 105	37	29	1073	90	42	50	135	•	27	36	25
Room 106	29	33	957	60	42	50	60	•	27	36	25
Room 107	31	33	1023	90	42	50	125	•	27	36	25
Room 106-107	60	33	1980	180	100	110	250	•	51	60	50
Room 108	50	28	1400	130	70	90	175	•	45	54	38
Room 109	63	31	1953	180	95	120	250	•	51	60	50

TOTAL LEVEL SQ. FT.

50145

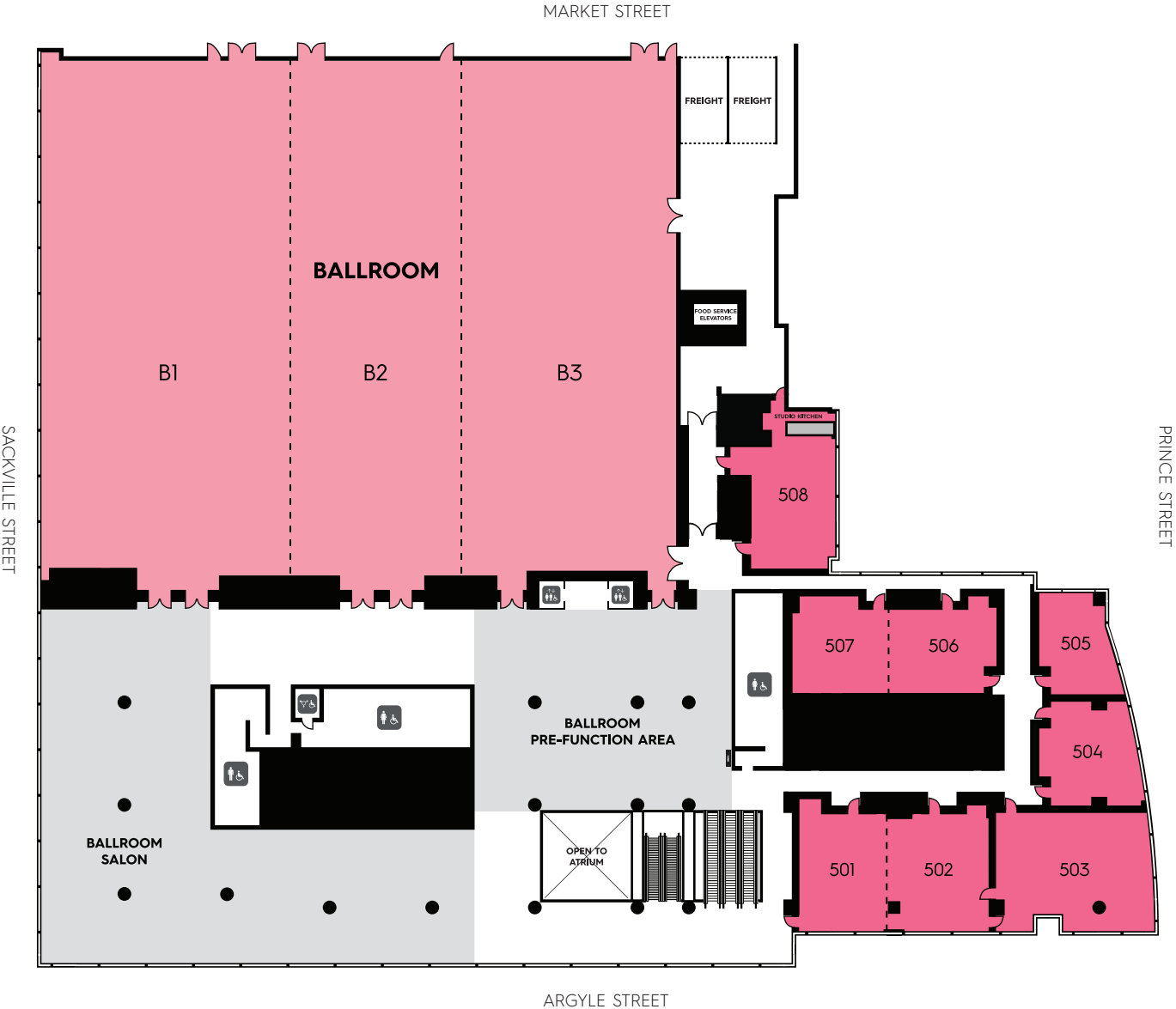
ARGYLE LEVEL & ATRIUM



ARGYLE LEVEL & ATRIUM

	L	W	SQ. FT.	Theatre AV/Stage	Classroom AV/Stage	Ovals of 10 AV/Stage	Reception	10x10 Booth	U Shape	Hollow Square	Board Room
Argyle Suite (A1-A3)	66	95	6270	600	275	360	800	30	•	•	•
Section A1	66	32	2112	200	102	120	250	10	57	66	•
Section A2	66	32	2112	200	102	120	250	10	57	66	•
Section A3	66	31	2046	200	102	120	250	10	57	66	•
Sections A1-A2	66	64	4224	400	200	240	500	20	57	66	•
Sections A2-A3	66	63	4158	400	200	240	500	20	57	66	•
Room 201	71	30	2130	200	102	120	250	10	57	66	50
Room 202	71	30	2130	200	102	120	250	10	57	66	50
Room 203	35	19	665	30	18	20	50	•	15	18	20
TOTAL LEVEL SQ. FT.			11195								

BALLROOM LEVEL



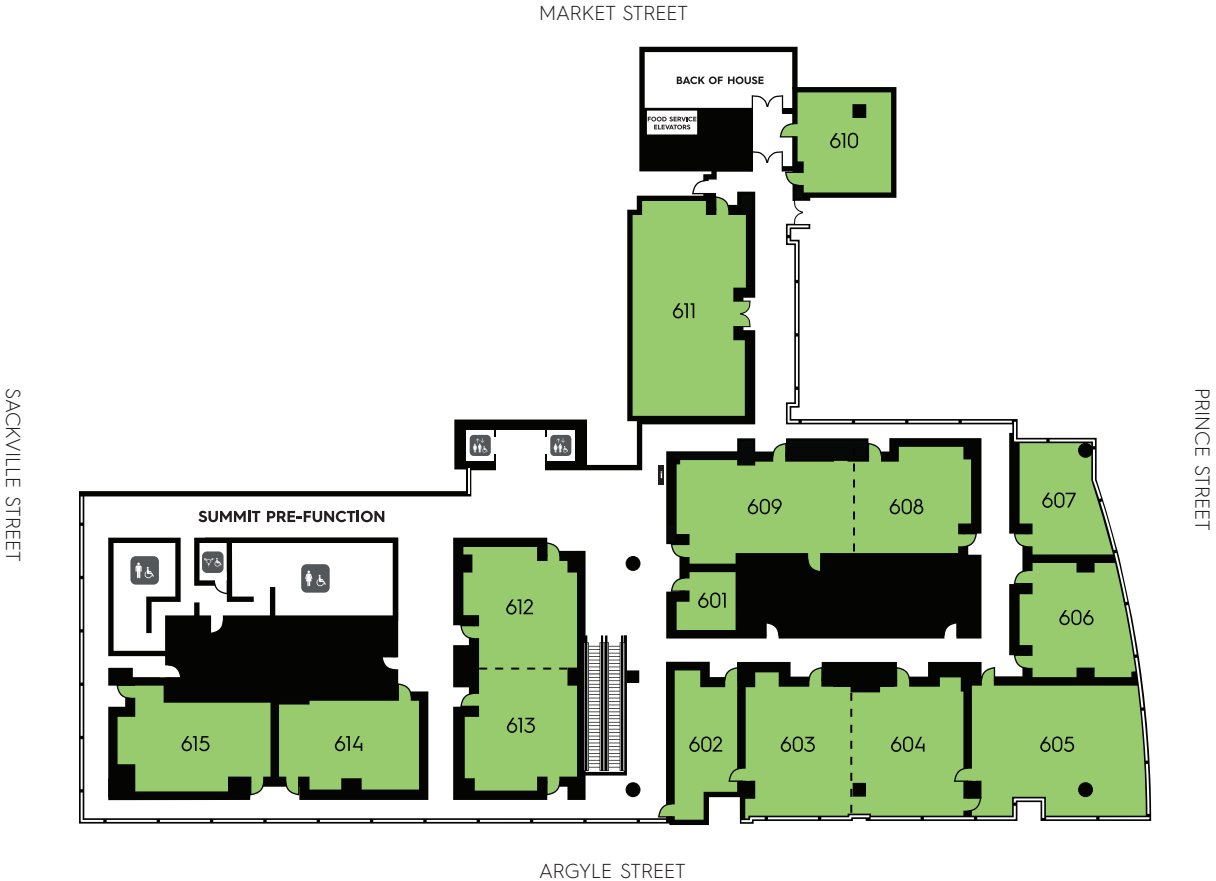
BALLROOM LEVEL

	L	W	SQ. FT.	Theatre AV/Stage	Classroom AV/Stage	Ovals of 10 AV/Stage	Reception	10x10 Booth	U Shape	Hollow Square	Board Room
Ballroom Pre-function			9500	•	•	•	1200	28	•	•	•
Ballroom Salon	108	56	6000	•	•	360	800	14	•	•	•
Ballroom	156	192	30000	2900	1600	2000	3000	170	•	•	•
Section B1	156	74	11544	975	570	660	975	67	•	•	•
Section B2	156	53	8268	725	380	440	950	41	•	•	•
Section B3	156	65	10140	950	500	550	1137	56	•	•	•
Sections B1-B2	156	127	19812	1825	1000	1300	2275	107	•	•	•
Sections B2-B3	156	118	18408	1725	950	1200	2275	106	•	•	•
Room 501	36	27	972	100	48	50	120	•	33	42	26
Room 502	36	30	1080	100	48	50	130	•	33	42	26
Room 501-502	36	57	2052	165	70	100	250	•	51	60	44
Room 503	36	48	1728	110	60	60	225	•	39	48	36
Room 504	32	31	992	50	24	30	120	•	21	30	20
Room 505	23	31	713	40	24	30	60	•	18	24	20
Room 506	27	31	837	55	24	30	100	•	18	24	20
Room 507	27	32	864	55	27	40	100	•	18	24	20
Room 506-507	27	63	1701	120	60	90	200	•	39	48	44
Room 508 (with Studio Kitchen)	30	25	750	40	27	30	60	•	18	24	20

TOTAL LEVEL SQ. FT.

43936

SUMMIT LEVEL



	L	W	SQ. FT.	Theatre AV/Stage	Classroom AV/Stage	Ovals of 10 AV/Stage	Reception	10x10 Booth	U Shape	Hollow Square	Board Room
Room 601	18	19	342	20	12	20	25	•	15	18	12
Room 602	29	20	580	40	18	30	50	•	24	30	20
Room 603	37	28	1036	100	48	50	120	•	33	42	26
Room 604	37	30	1110	100	48	50	130	•	33	42	26
Room 603-604	37	58	2146	180	77	120	250	•	51	60	44
Room 605	48	37	1776	110	60	60	225	•	39	48	36
Room 606	31	32	992	50	24	30	125	•	21	30	20
Room 607	31	23	713	40	24	30	60	•	18	24	20
Room 608	32	27	864	55	24	30	100	•	18	24	20
Room 609	49	27	1323	120	54	60	150	•	42	48	38
Room 608-609	81	27	2187	175	80	100	250	•	60	66	56
Room 610	28	26	728	30	18	20	40	•	21	24	20
Room 611	58	31	1798	155	72	100	225	•	45	54	44
Room 612	34	32	1088	85	40	50	120	•	27	36	26
Room 613	29	32	928	70	40	50	100	•	27	36	26
Room 612-613	63	32	2016	165	80	100	200	•	51	60	44
Room 614	40	24	960	90	45	50	100	•	30	36	32
Room 615 (Exec. Boardroom)	40	24	960	•	•	•	•	•	•	•	19

TOTAL LEVEL SQ. FT.

15198